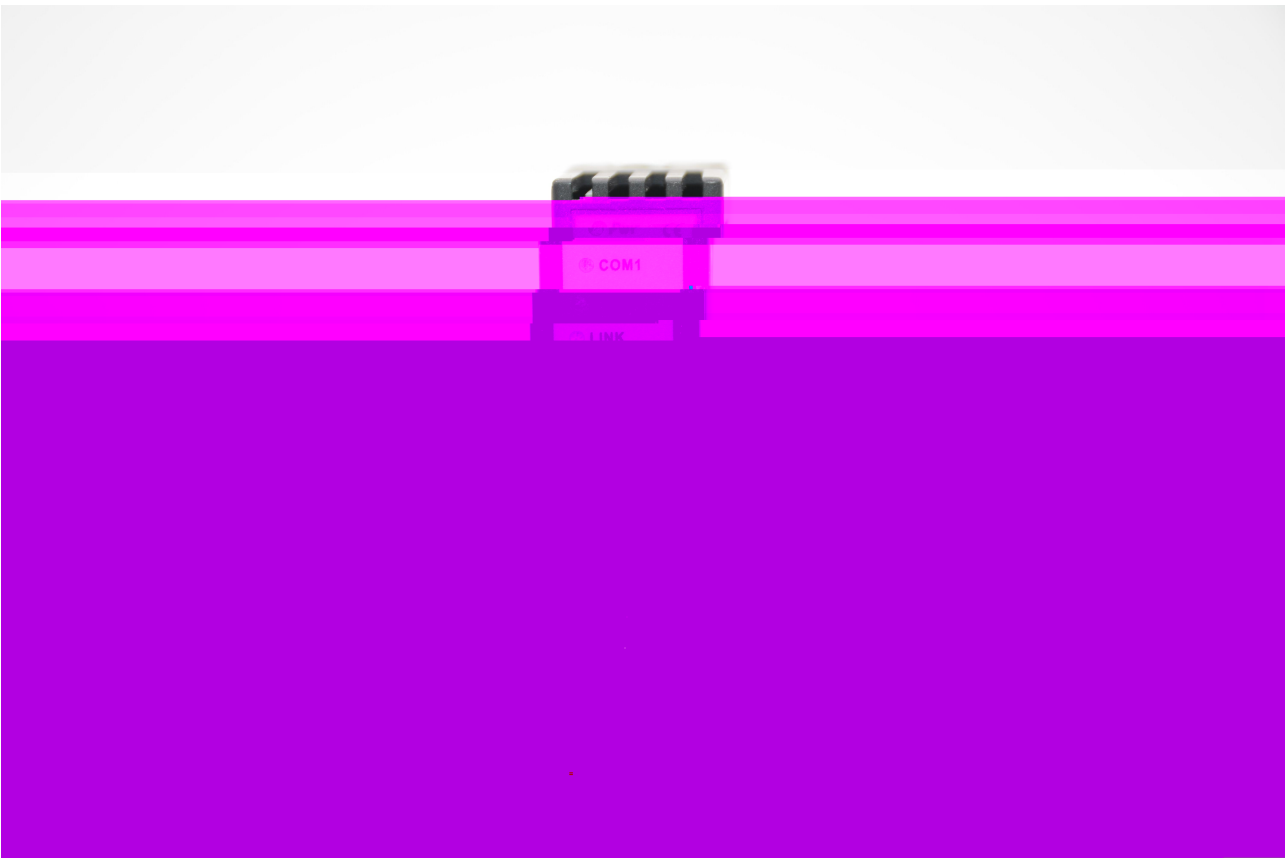

ROUIN

KV PLC



RVNet - KV

RVNet - KV

KV PLC
PLC
X2 PLC

/

PLC

1

35mm
RVNet - KV

COM
KV

KV RS232

24VDC

COM2

|

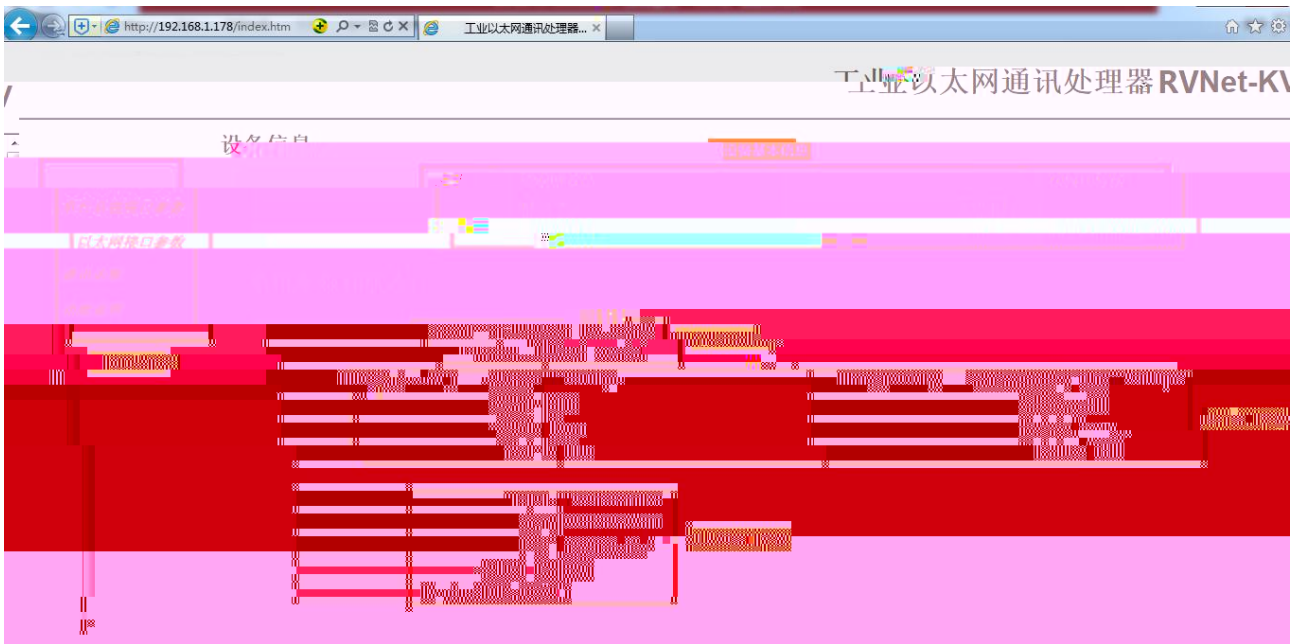
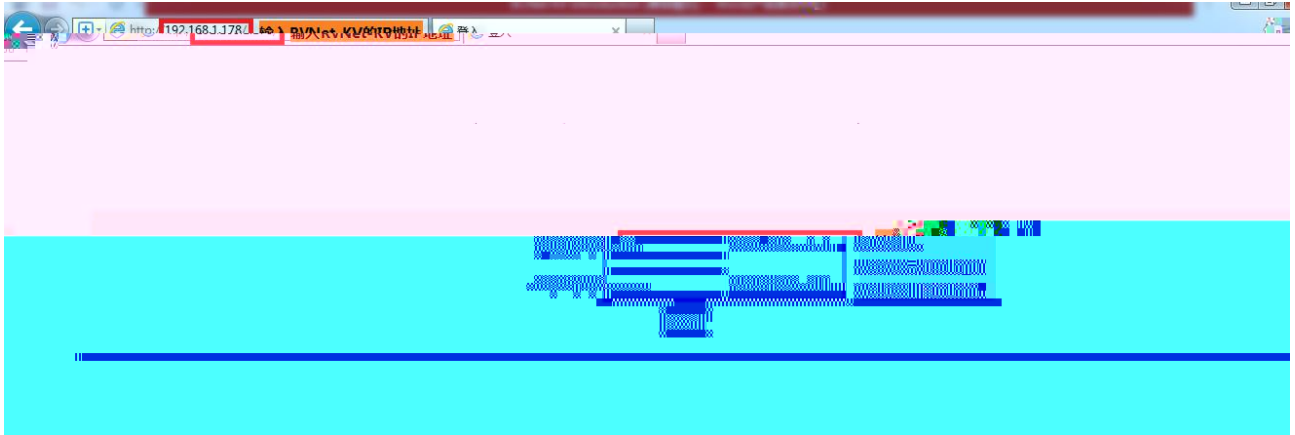
RVNet-KV产品的硬件和接口图

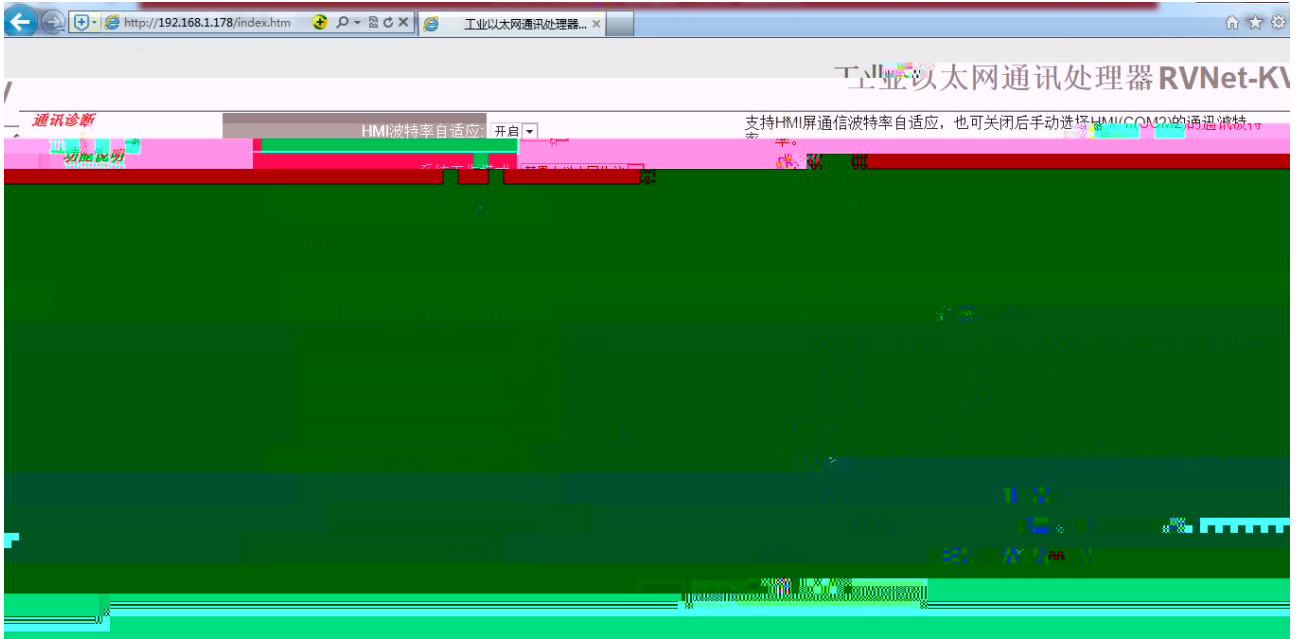


|

	Blue	Blue	Blue	Blue
	Red			
	Red			Green









8501

工业以太网通讯处理器RVNet-KV



RVNet - KV
ModbusTCP

SCADA

RVNet - KV
OPC
PLC

PLC

FC1 FC3 FC5 FC6 FC16

ModbusTCP
ModbusTCP
Modbus
RVNet

ModbusTCP

KV

ModbusTCP
PLC

KV

ModbusTCP

0x0	0x0	0x0	0x0	0x0								

1

Modbus	KV	PLC				
000001		R00000		Rm = 000001+(m/100)*16+m%100		
016385	M000000			Mm = 016385+(m/100)*16+m%100	FC1()	FC1: 512
032769	L000000			Lm = 032769+(m/100)*16+m%100	FC5()	FC5: 1
049153	C000000			CRm = 049153+(m/100)*16+m%100		
400001	D00			Dm = 400001+m	FC3() FC16() FC6()	FC3: 125 FC16: 125 FC6: 1

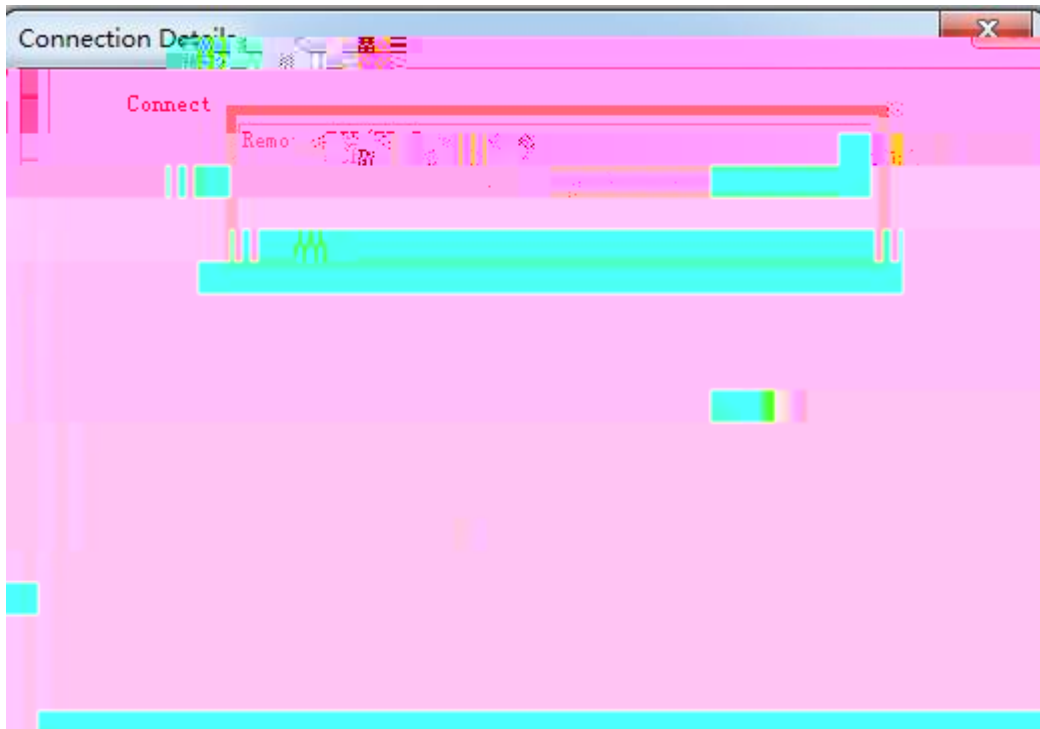
$$\frac{m}{100} \cdot 100 + m \% 100$$

$$\frac{m}{100} \cdot 100 + m \% 100$$

R00015 R00100
 PLC 16

2 ModScan32

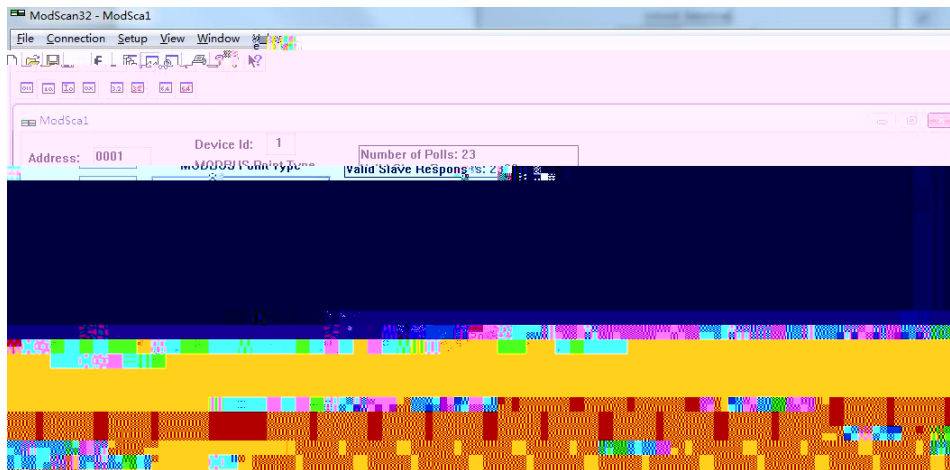
- 1. \ \ modscan2_cr.rar
- 2. ModScan32
- 2. Connection/Connect Remote TCP/IP Server RVNet - KV IP Service
- 502 [OK] 1



1

3. "ModSca1" Device ID PLC 1 03: HOLDING REGISTER
 Address = 0001 Length = 100

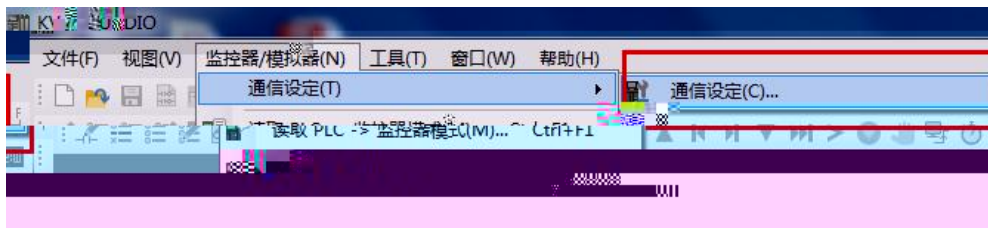
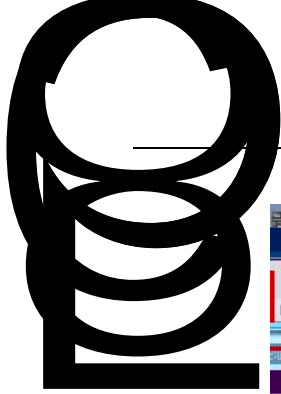
4. 400001 400100 16 KV PLC DMO DMOO
 2



2

5.

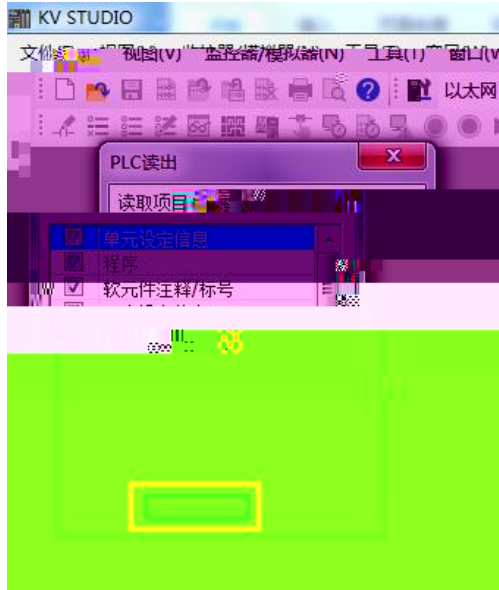
1. KV STUDIO Ver. 9G_Trial " / " " "



2.

RVNet-KV IP

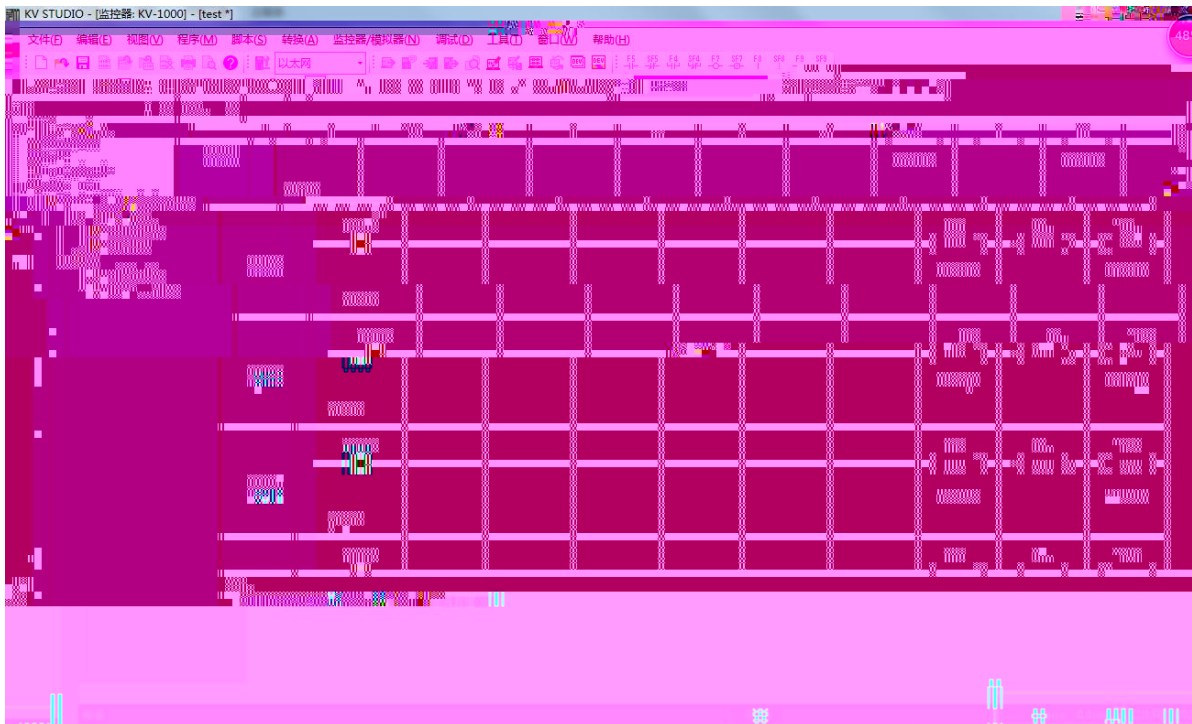
8500



5.

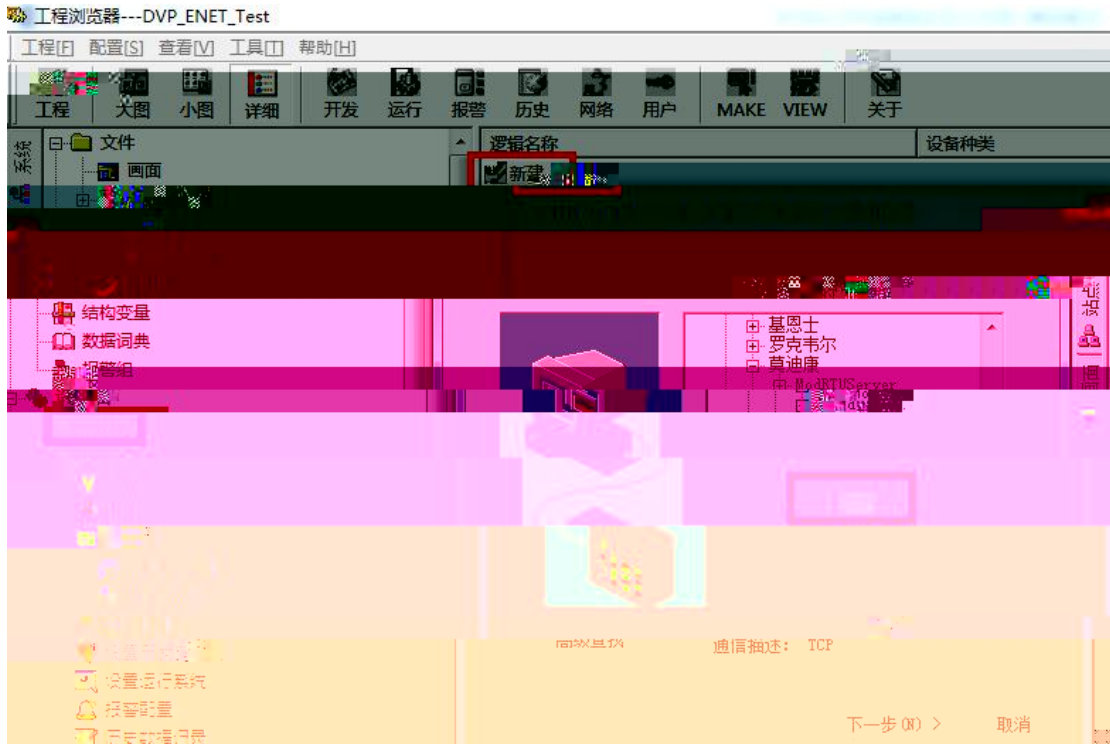


6.



1.

2. " COM" " " " ModbusTCP—TCP" " "

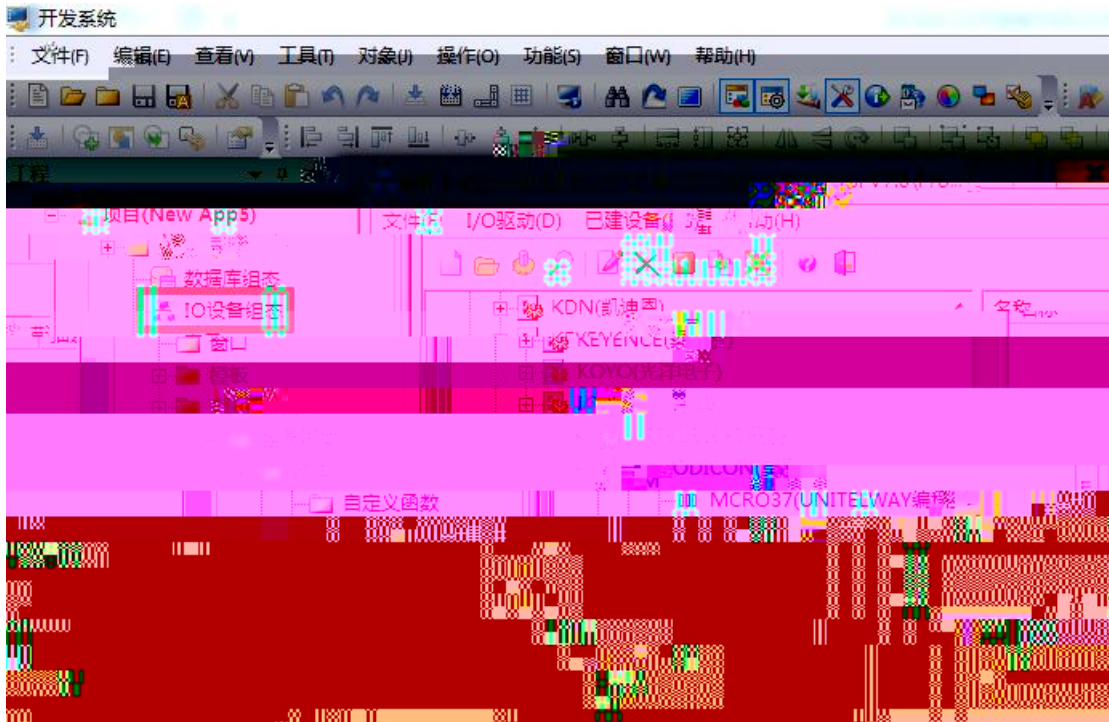


3.



4. RVNet-KV e

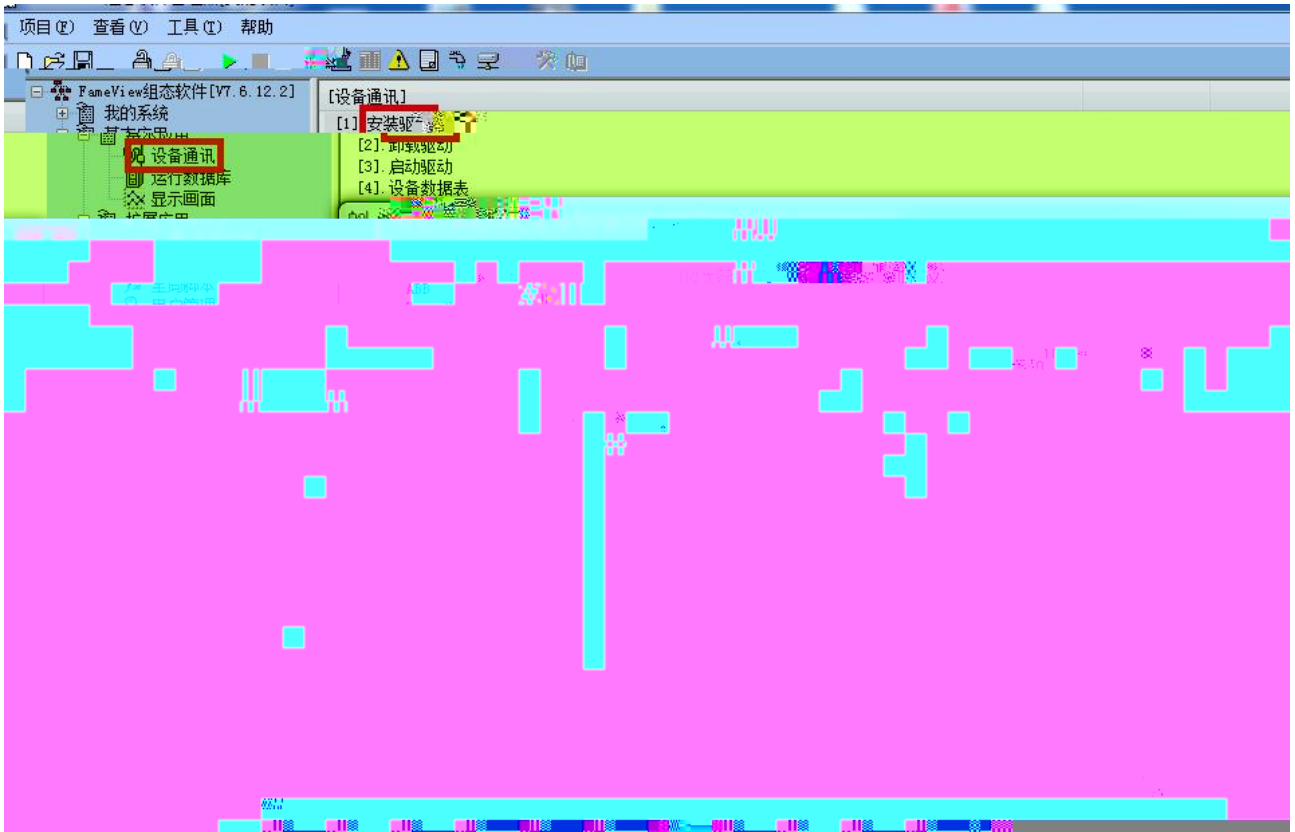
1. " IO " PLC " MODI CON -MODBUS TCP "



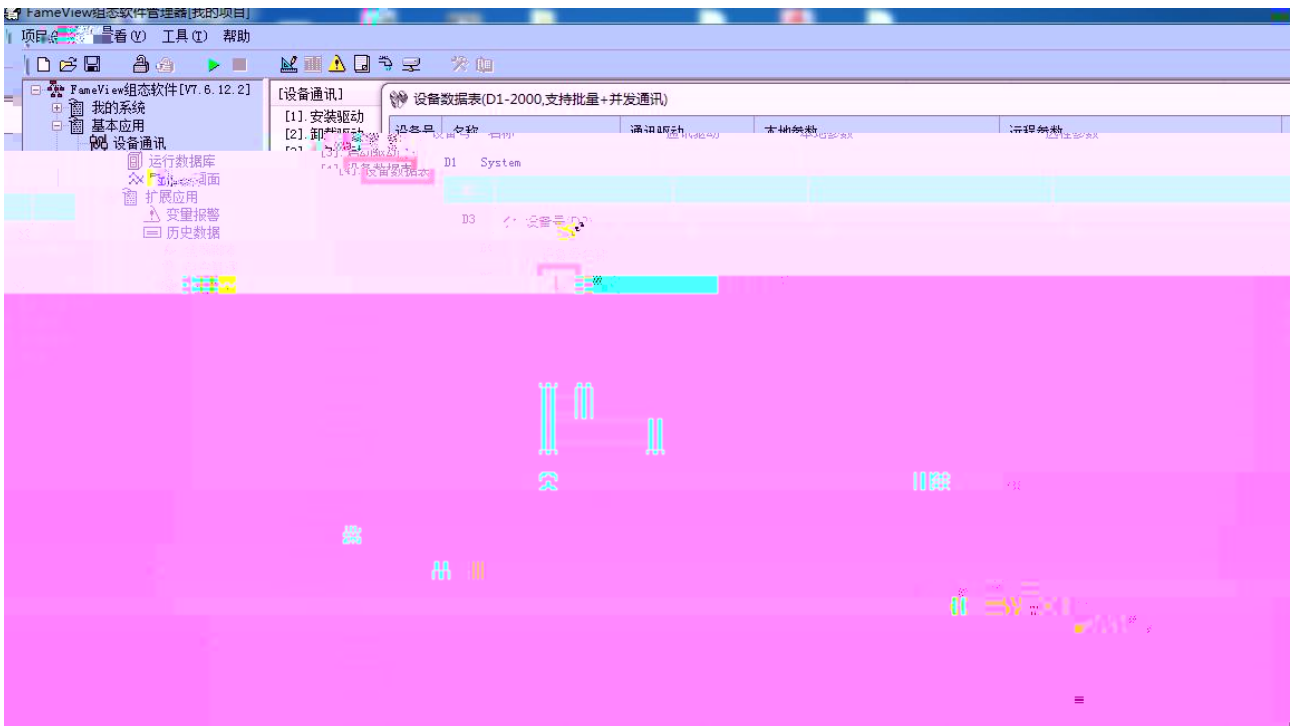
2. " " DVP " " 1 " "



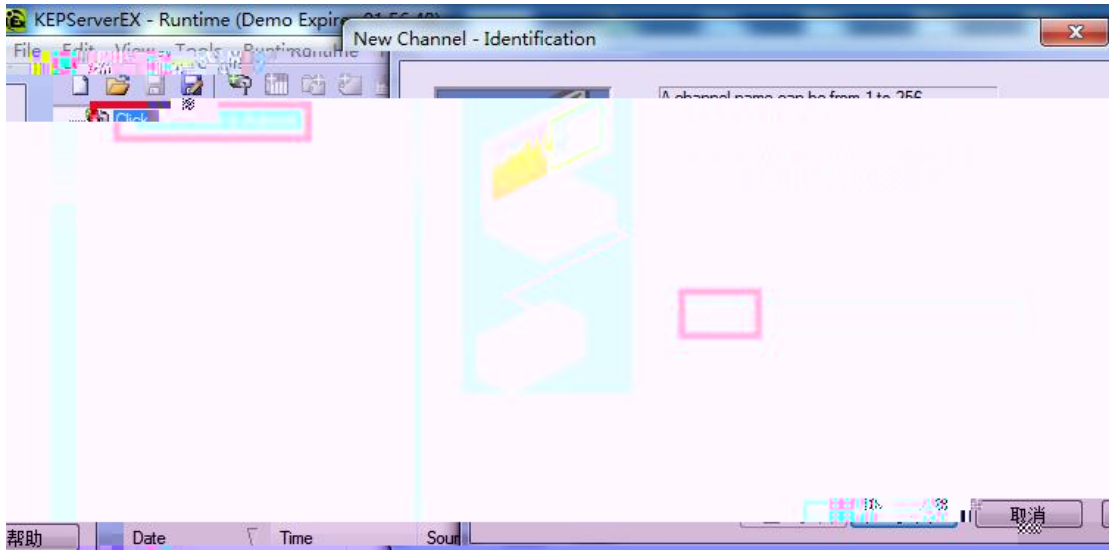
3. " IP " RVNet-KV IP 192.168.1.178 " 502



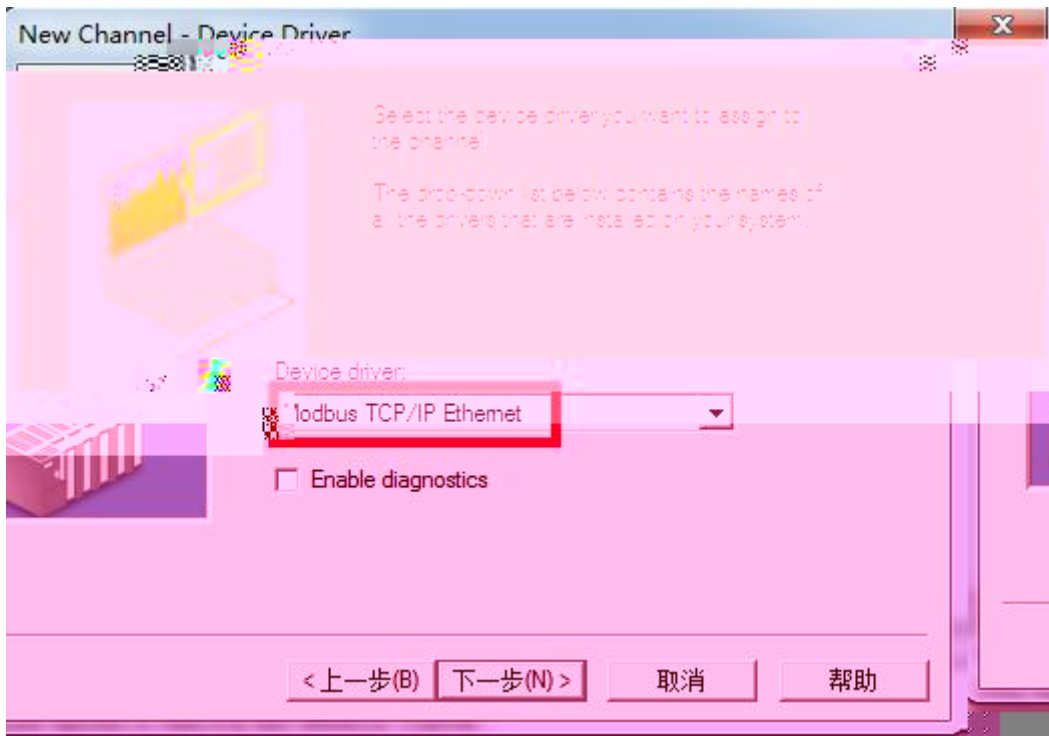
2 " " " " " XJ " " " 502 " IP
 " RVNet-KV IP 192.168.1.178 " "



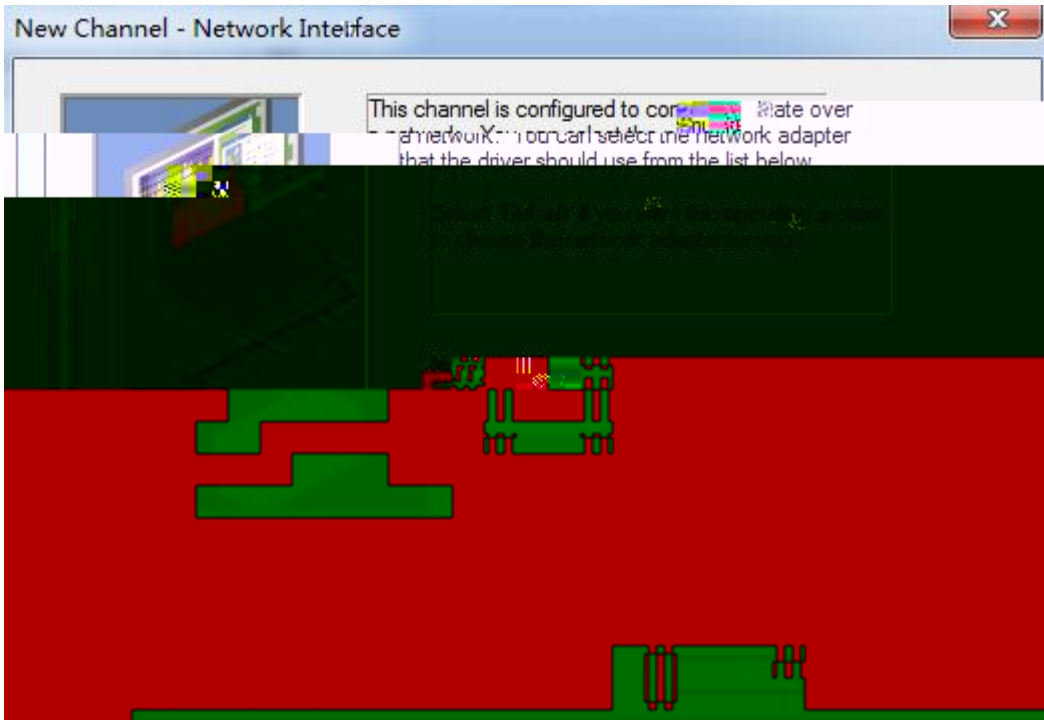
1. KEPServer EX " Click to add a channel " "



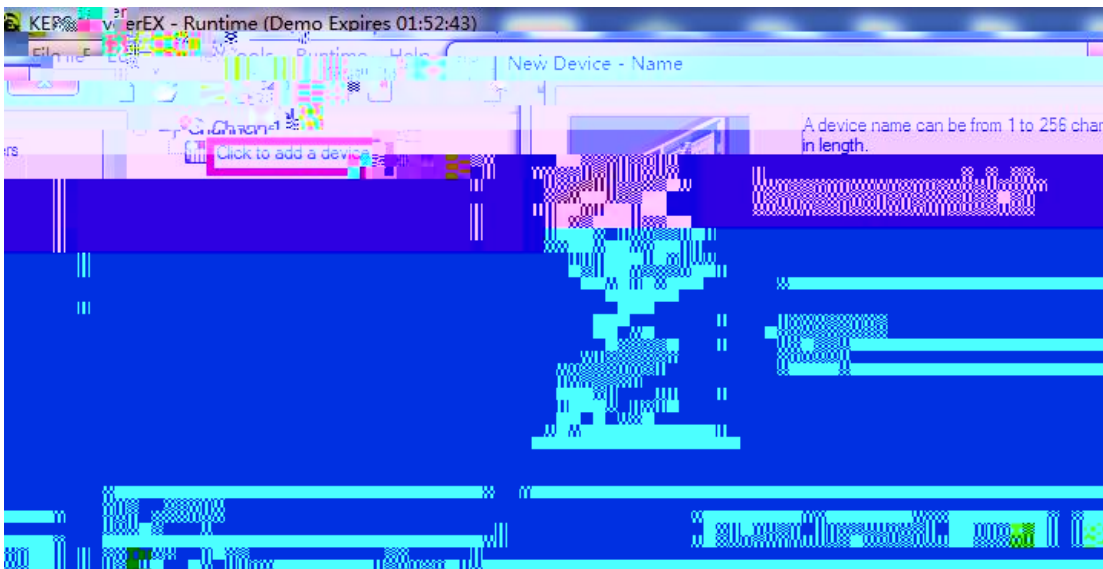
2. "Modbus TCP/IP Ethernet"



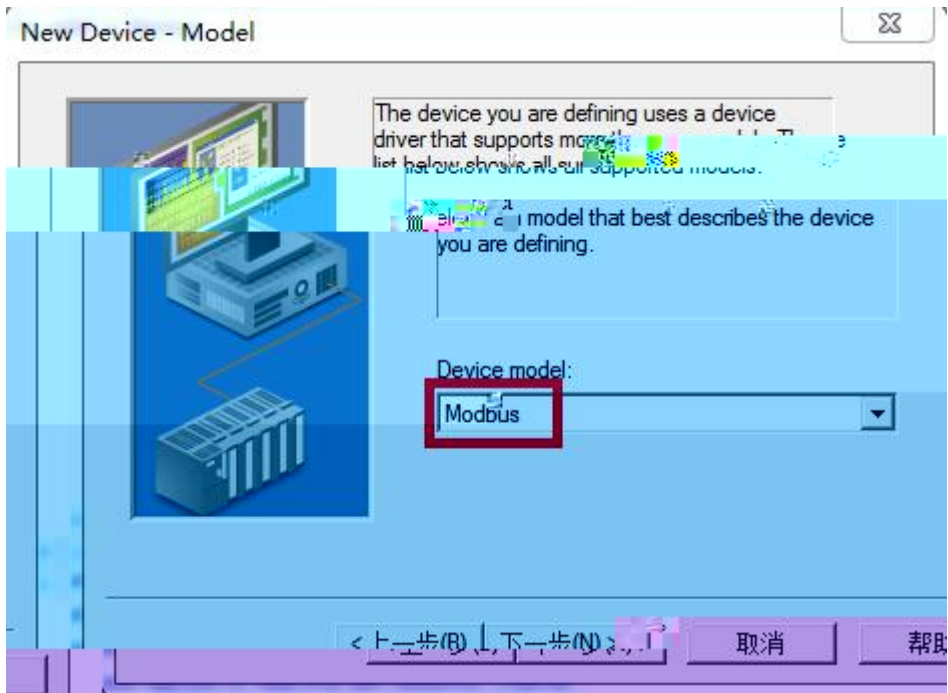
3. "Default"



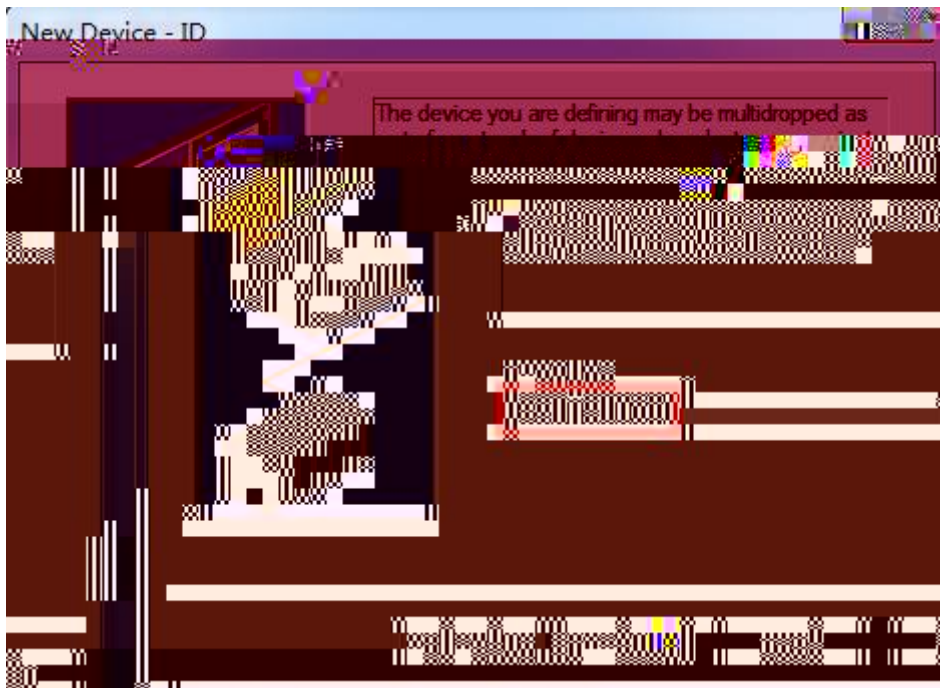
4. " click to add a device" , " "



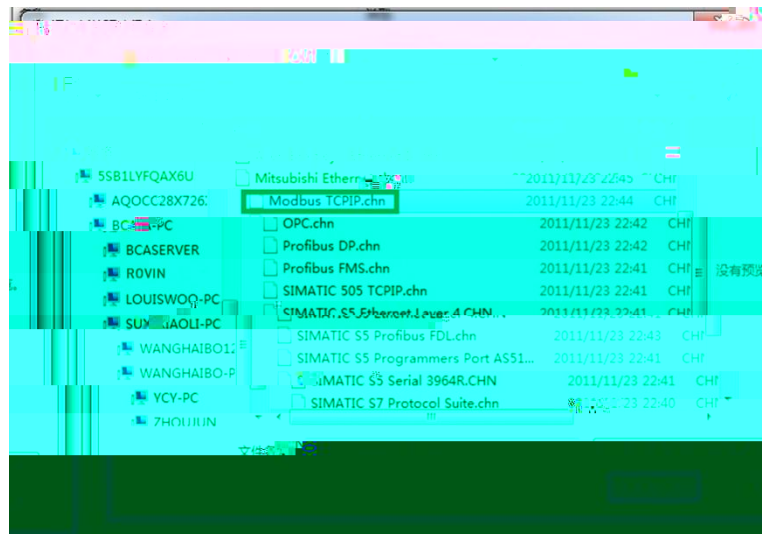
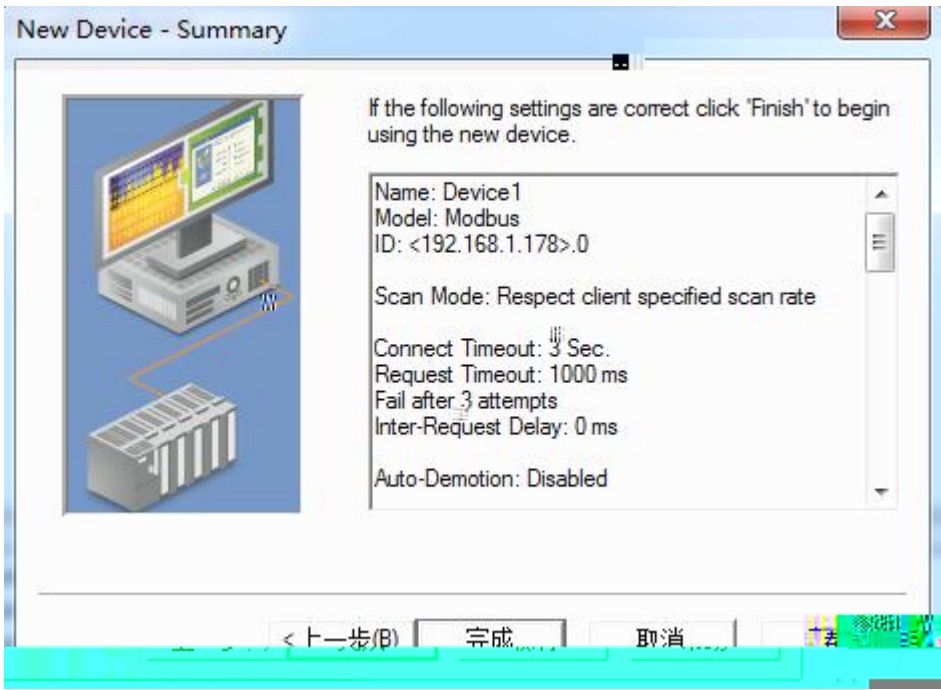
5. " Device Model " " Modbus"



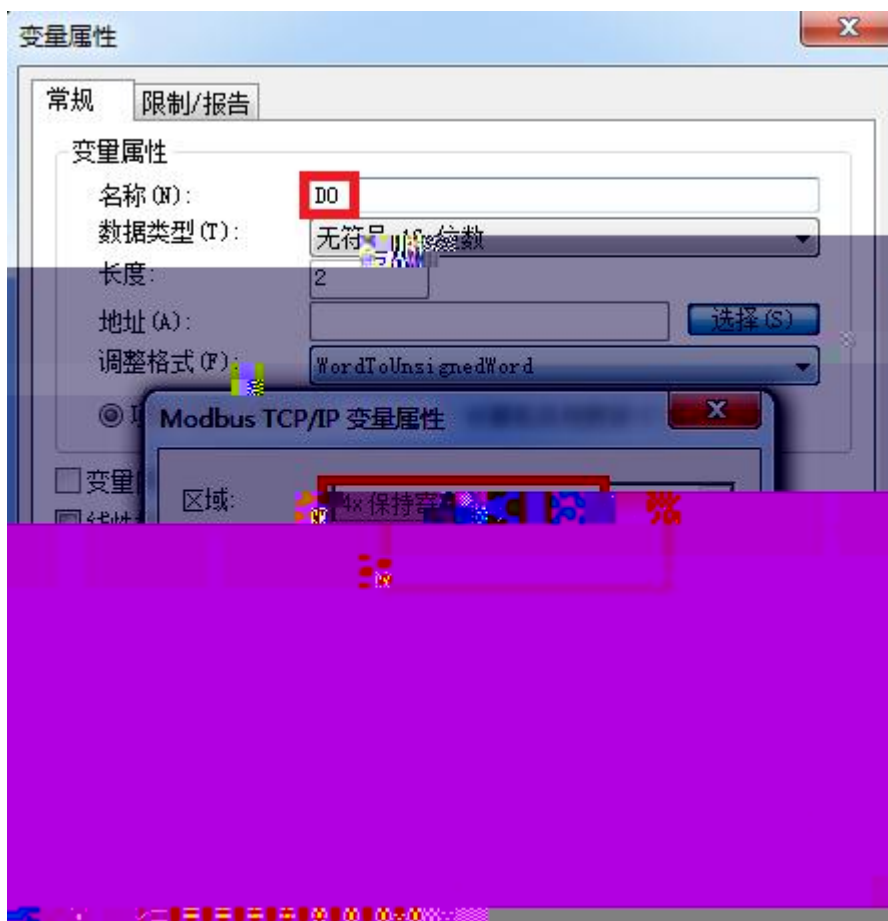
6. " Device ID" IP .0 192.168.1.178.0



7.



" " " " " "



		KV		PLC					
		Pwr	COM1	COM2	Link				
		IEEE 802.3		Link/Active				Auto-MDIX	
		RJ45							
		10/100Mbps							
		KV STUDIO			ModbusTCP			RVNetTCP	
TCP		6							
X1	PLC	RS232							
		RJ11							
		9.6K	19.2K	38.4K	57.6K	115.2Kbps			
		KV							
X2	HMI	RS232							
		RJ11							
		9.6K	19.2K	38.4K	57.6K	115.2Kbps			
		KV							
		KV STUDIO							
OPC		KepWare OPC							
		IE		192.168.1.178					
		KV				24VDC			
		24VDC/100mA							
		0~60							
		90%							
		35mm							
		2014/30/EU							
RoSH									
		4.5mm/30Hz/10Min							
ESD		6KV							
		60		168		50000			
		30	PLC		1	3		0	
		CE							
L*W*H		90*24*65mm							
		120g							

